



*International research center for
remote sensing, earth observation
and land management*

OBSERVE YOUR WORLD

A member of:



About us 2

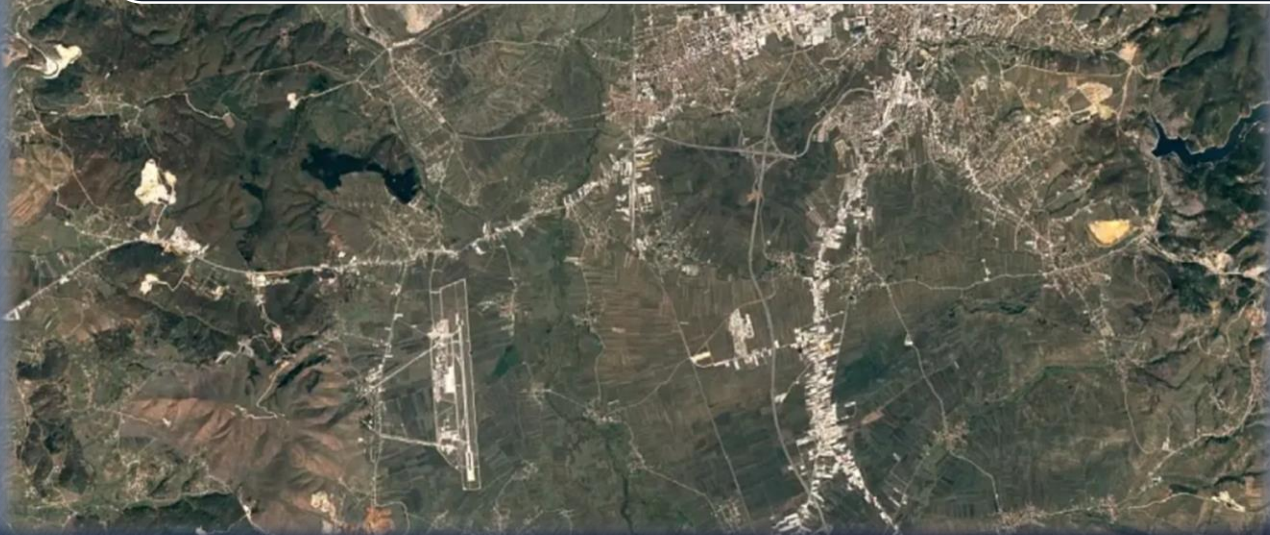
Earth Observation for Sustainable Development - is a new ESA initiative which aims to achieve a step increase in the uptake of satellite-based environmental information in the IFIs regional and global programs. It will follow a systematic, userdriven approach in order to meet longer-term, strategic geospatial information needs in the individual developing countries, as well as international and regional development organizations.

About us

3

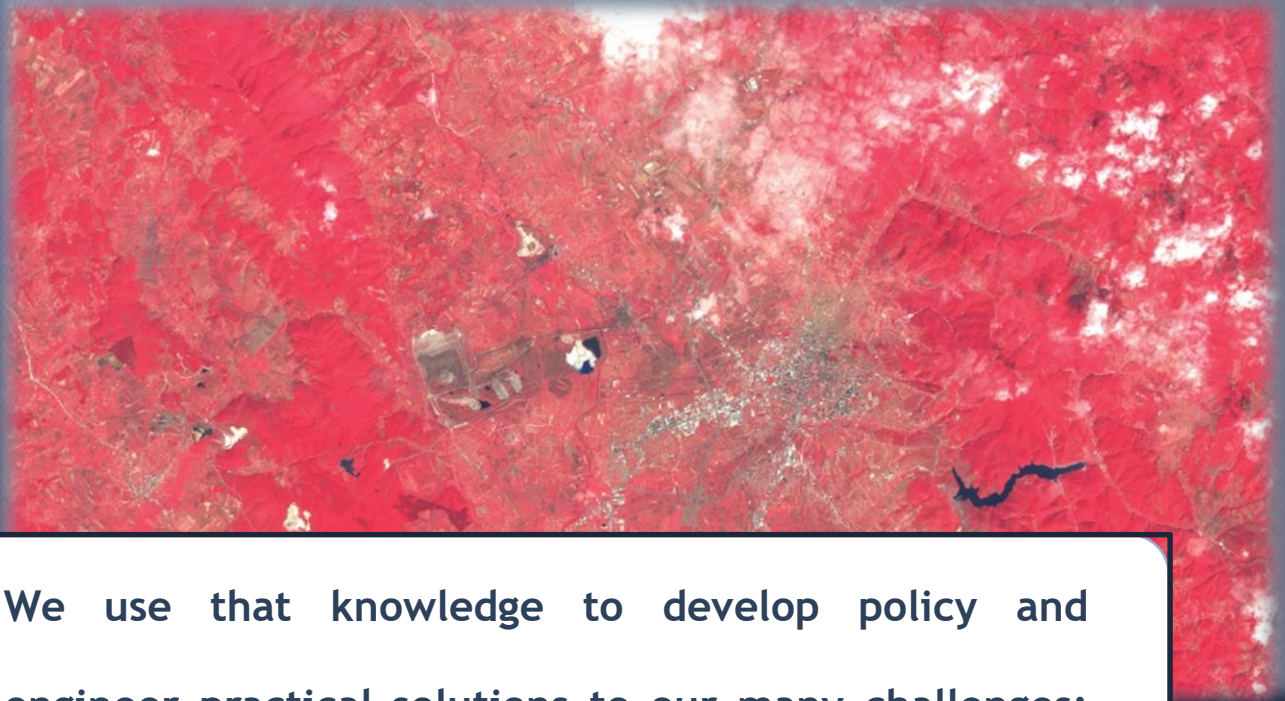
Who we are?

A research center established to serve as non for profit organization providing services in line with Earth Observations for Sustainable Development Goals (EO4SDG), an international initiative from the Group on Earth Observations, playing a key role to advance global knowledge about effective ways that Earth observations and geospatial information can support the SDGs.



About us

4

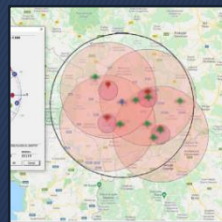
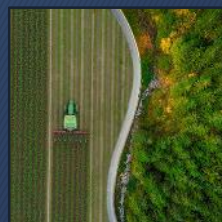
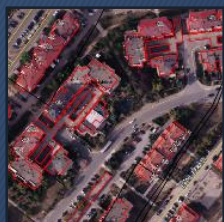
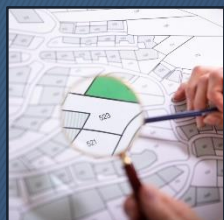


What we do?

We use that knowledge to develop policy and engineer practical solutions to our many challenges: climate change and environmental degradation, land, water, soil, natural hazards, the need for clean and accessible energy, water and sanitation, and the sustainable use of resources. We remain as a center for collaboration with international partner following environment and global earth agendas.

About us

5



The staff of the Earth Observation Institute are earth scientists, geodesists, GIS, property rights, cadastral, space engineering, business and policy experts, researchers, teachers and students. The institute own research center and several people who collaborate across many disciplines across region and worldwide. We seek to be a strong partner for global earth problems regarding earth geo dynamics, hazard, environment and many other land, soil and water analysis.

Why EOI?

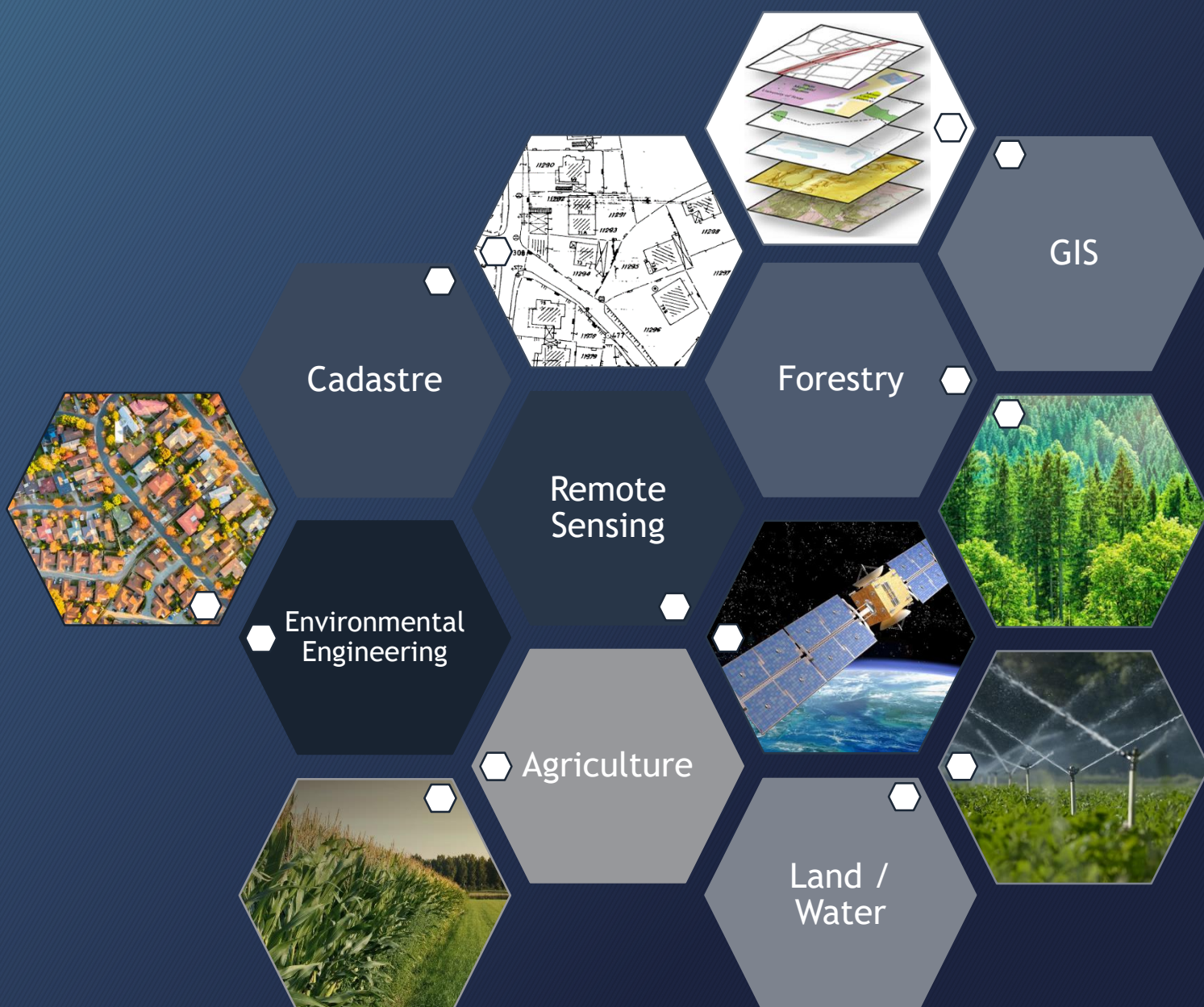
6

Our mission is to provide accurate and reliable data based on various observations. These data gives necessary information on different topics. Planning, analysis, monitoring, research, studies, assessments, design, visualization, reports are just some of our services to ensure the most accurate management:

- remote sensing,
- forecast and real time climate information,
- research to improve predictions, preparation and response for disaster management,
- monitoring and analyses of forestry,
- agriculture management,
- discover, develop and demonstrate of water recourses,
- creating of thematic maps with large amount of data, etc.

Research and Services

7



Departments

8



Department of Remote Sensing and Earth Observation



Department of GIS



Department of Land Management, Property Rights and Cadastre



Department of Environmental Engineering



Department of Vocational Education and Training

Projects

9

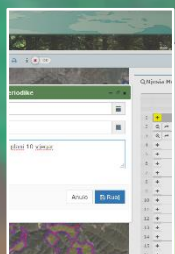
GIS and Agriculture



Creation of soil map



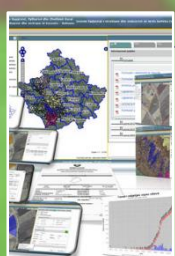
National Farmer and Payment System (SPFN)



Integration of GIS Module and other functionalities in Kosovo Forest Information System



Development of vineyard cadastre and national register for Kosovo based on GIS



Further development of vineyard register and interoperability with national farm register system of Kosovo



Creation of vineyard cadastre for Rahovec area and based on GIS

Projects

10

Software Development



Design, development, installation, delivery and after-sales service of Kosovo Forest Information System



Development of vineyard cadastre and national register for Kosovo based on GIS



Further development of vineyard register and interoperability with national farm register system of Kosovo



Development of GIS system for local government



National Farmer and Payment System (SPFN)



Creation of vineyard cadastre for Rahovec area and based on GIS

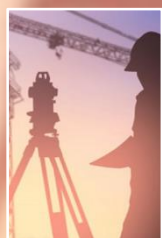
Geodetic and Cadastral Surveying



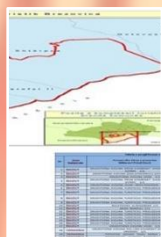
Development of an expropriation application for economic zone in Drenas



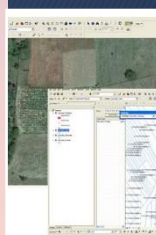
Land surveying for urban planning



Survey Services



Application of expropriation for Brezovica Resort



Creation of digital maps for GIS advancement



Cadastral Reconstruction in 5 cadastral zones



Consultancy services in topographic surveying and agriculture



Resurveying of immovable property for tax purposes

Geodetic and Cadastral Surveying



Topographic surveying
New CO Ferronickel L.L.C



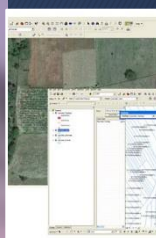
Geodetic measurements
and maps producing for
ILS and CAT 2



Digitalization of cadastral
data for Peja municipality



GPS Installation,
monitoring and Training of
the municipality staff



Establishment of
geophysical grid by means
of GPS



Surveying and 3D mapping
of the dumps in 7
Municipalities

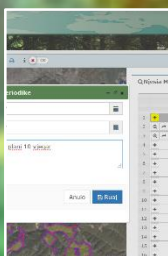


Creation of Building
cadastre in 5 major cities
in Kosovo

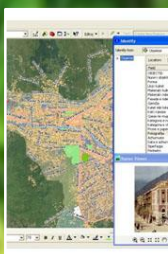
Projects

13

Forestry



Integration of GIS Module and other functionalities in Kosovo Forest Information System



Support to Implementation of the Forest Policy and Strategy in Kosovo



Development of management plans for forestry

Contact us

14



Address:
Shpetim Robaj PN,
10000, Prishtinë,
Kosovo

E-mail:

info@eo-ins.org



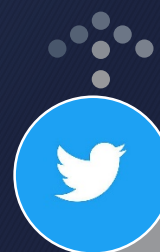
Telephone:
(+383) 44 244 748

Website:

www.eo-ins.org



Feel free to contact
us for more
information. We look
forward to
cooperation and new
challenges.



[@eoinstitute](https://twitter.com/eoinstitute)



[@eoinstitute](https://facebook.com/eoinstitute)



[@eoinstitute](https://linkedin.com/company/eoinstitute)